

# Solid State Relay

## MS (IP20) Series 2 Channel AC Output

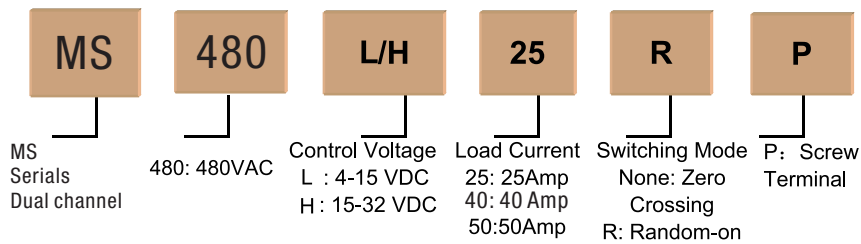


- Zero Crossing or Random-on
- Load Current: 25A, 50A @24-530VAC
- SCR Output
- DC Input
- Opto-isolation:  $\geq 4000\text{VACrms}$
- ROHS Compliant
- IP20 Safety Cover Protection

### Product Description

MWID series industrial 2 channel relay with SCR output is widely used in industry applications. The relay can be used for resistive, inductive or capacitive load. The load voltage is 24-530VAC, output current is rated at 25A or 50A.

### Product Selection



Example: MS-480-L-25-P  
25 amps 480V, Zero-crossing trigger, Screw type

### Technical Specification <sup>(1)</sup>

#### Input Circuit

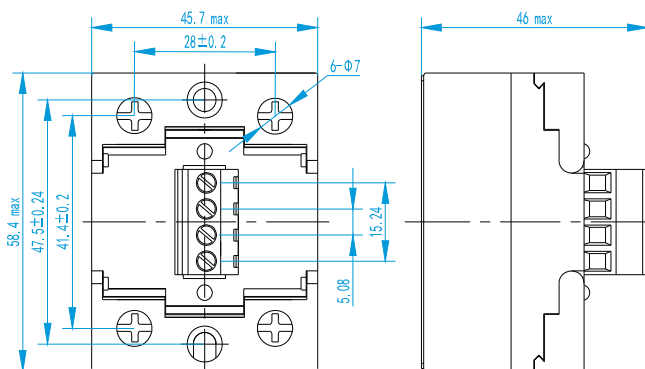
Control Voltage Range	L	4-15VDC
	H	15-32VDC
Minimum Turn-on Voltage	L	4VDC
	H	15VDC

Minimum Turn-off Voltage		1VDC
Maximum Input Current	L	50mA
	H	20mA
<b>Output Circuit</b>		
Load Voltage Range	240	24-280VAC
	480	24-530VAC
Maximum Turn-on Time	Random-on	1ms
	Zero Crossing	10ms
Maximum Turn-off Time		10ms
Maximum Surge Current [@10 ms]	25A	300A
	50A	500A
Maximum I <sup>2</sup> t [@10 ms]	25A	450A <sup>2</sup> s
	50A	1250A <sup>2</sup> s
Transient Overvoltage	240V	600Vpk
	480V	1200Vpk
Maximum Off-State Leakage Current [@ Rated Voltage]		3mA
Maximum On-State Voltage Drop [@ Rated Current]		1.5Vrms
Minimum Off-State dv/dt [@ Maximum Rated Voltage]		500V/μs
<b>General Information</b>		
Dielectric Strength [50/60Hz]	Input/Output	≥4000Vrms
	Input, Output/Base	≥2500Vrms
Ambient Operating Temperature Range		-40°C ~ +80°C
Ambient Storage Temperature Range		-40°C ~ +100°C
Weight [Typical]		180g <sup>(2)</sup>

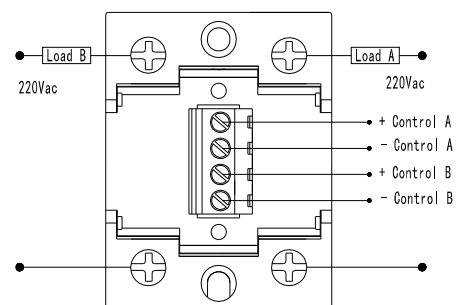
## Application

High-low Temperature Chamber, Plastics Machinery, Incubation Machine, Oiling Machine, HVAC, Elevator, Lighting, Fountain Controller.

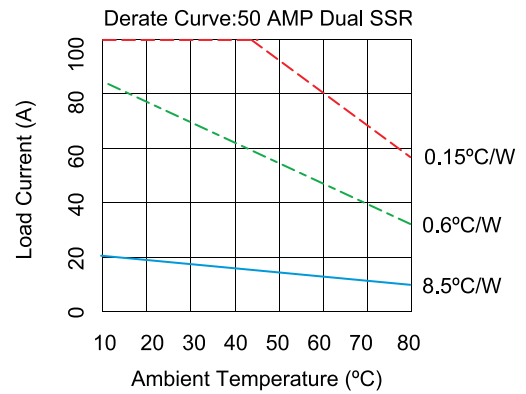
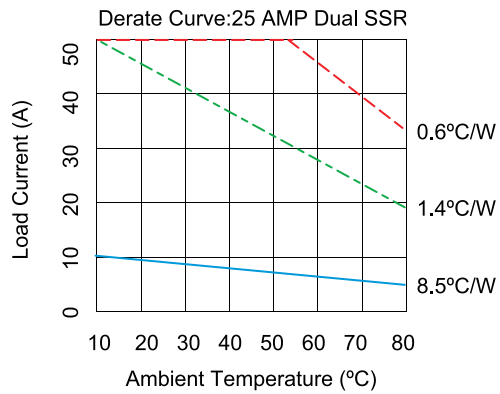
## Installation



## Connection



## Thermal Curve



## Important Notice

- 1 Thermal grease or pad must be applied when mounting the heatsink.
- 2 The load current must be derated when installing the SSR closely together .

## General Note:

- (1) The above parameters are for single channel only.
- (2) The weight of 25A product is 150g.

## Product Certification

